

# WOLF

Thank You!  
In Memory of Meeka  
Say Hello to Reese & Thor





# Letter from the Director

Dear Supporters:

In preparing our fall newsletter, we could not have imagined that Colorado, especially Northern Colorado, would be in the national spotlight after torrential rains fell, beginning September 11th and continuing for days, leaving the state and thousands of residents affected by flood waters higher than what was measured during the Big Thompson Flood of 1976.

But storms subside, the sun shines and Coloradoans step up to help each other. Yes, the Sanctuary was affected by the flooding but we are focusing on the amazing amount of support that has materialized in the form of volunteer work groups, in-kind donations, monetary donations and local news outlets sharing our story. Throughout this newsletter we are highlighting just some of the individuals and organizations that have helped W.O.L.F. You can view news clips on our website ([www.wolfsanctuary.net](http://www.wolfsanctuary.net)) and on our Facebook page ([www.facebook.com/nocowolfsanctuary.net](http://www.facebook.com/nocowolfsanctuary.net)).

As a result of several major natural disasters over the past 15 months, challenging road access and lack of standard utilities, the Board of Directors has made the decision to begin the search for a new Sanctuary home. We'll cover this more in a future newsletter but our wish list includes 70-75 acres of donated land or land that we can finance or lease, access to utilities, surface water (i.e., a pond), easy public access and easy emergency access or egress. If you have any leads for a possible new home for W.O.L.F. please contact me!

Since our last issue, we are saddened to share that we had to say goodbye to Meeka. Please read our tribute to her inside these pages. We have also welcomed new residents Reese and Thor. Each of their unique paths to W.O.L.F. is highlighted in this newsletter.

The holiday season will soon be here and we are debuting merchandise that will make great gifts for you, your family and friends, from apparel and drinkware to notecards and jewelry. We have something for everyone AND we are also launching a very special commemorative *W.O.L.F. Wit* book that you don't want to miss!

Lastly, mark your calendars to make a donation to W.O.L.F. on Colorado Gives Day, Tuesday December 10th. Review and then cut out the ad copy on the back cover so you don't miss the chance to give. 100% of your gift will be given to us and we can also earn bonus funds by receiving donations during Colorado Gives Day.

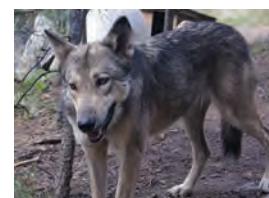
As Always, Humbly Yours,

Shelley



# In This Issue

Cover Photo: Drake



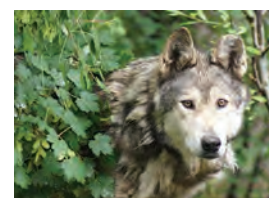
## Reese's Piece..... 4

In mid-August we welcomed the stunningly beautiful Reese, whose arrival has made Outlaw a much happier fellow and the Sanctuary a much quieter place!



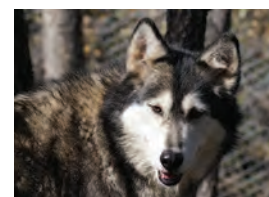
## Thank You Volunteers..... 6

We are excited to welcome two new wolf dogs into the W.O.L.F. family, Bella Roux and Ariel. Here are their stories.



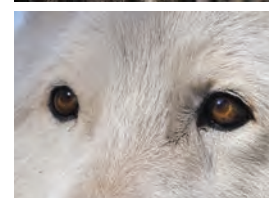
## Saying Goodbye to Meeka..... 8

An ear, a tail, a movement behind the bushes, a blur up on the mountain. This is how most of our staff, volunteers and visitors encountered Meeka.



## Update: Bella Roux, Ariel & Outlaw..... 12

Our new additions to the Sanctuary are doing great and as always we are excited to share with you some of their successes.



## Estate Planning & Legacy Gifts..... 14

There are many ways to donate to W.O.L.F. including gifts of cash, in-kind gifts of goods or services, and estate gifts.



## Thor: Another Norse God?..... 15

Our shy girl Ariel's waiting for a companion of her own finally ended September 5th with Thor's arrival from California.



IRS Tax Exempt Status Under Section 501(c)(3)  
Colorado Nonprofit & Tax Exempt Corporation  
United States Department of Agriculture, Licensed  
Colorado Department of Agriculture, Licensed  
Colorado Parks and Recreation, Licensed  
Global Federation of Animal Sanctuaries, Accredited  
American Sanctuary Association, Accredited  
Community Shares of Colorado, Member

**Mission:** To improve the quality of life for all wolves and wolf dogs.

### Strategic Objectives:

**Rescue** - Save captive-bred wolves and wolf-dogs whose guardians are no longer able to care for them.

**Sanctuary** - Provide a lifelong home at W.O.L.F. that takes into account each animal's physical and emotional needs.

**Education** - Provide the public with information about wolves (both wild and captive) to help foster a greater understanding of them and their value.

Reproduction of materials from this publication is permitted provided that the content is not altered and credit is given.  
"Reprinted from W.O.L.F.- [www.wolfsanctuary.net](http://www.wolfsanctuary.net)"



## Good Eats

**MEAT:** it's what's for dinner, we hope! Thankfully, several businesses in the greater Fort Collins area have been graciously donating meat to W.O.L.F. on a regular basis. We want to acknowledge those organizations that have been providing our critters with some pretty good eats.



Collectively the King Soopers stores have been among our largest meat donors. "We appreciate the opportunity to give the meat to the wolves rather than to the renderers," says Desiree, meat department manager at the King Soopers Taft & Elizabeth store (at left, with Cody and Pavel). They have been donating meat for longer than she could recall. Daniel, one of the meat clerks at the N. College market, is also appreciative of the opportunity to help the Sanctuary and hopes that the relationship continues for as long as possible (we do, too!). The stores at South College and Drake & Timberline also provide meat donations. Thanks, everyone!



Whole Foods Market is another wonderful donor of good quality raw meat. It's always a pleasure to work with them on either side of the counter. Andy, the department manager (Third from left, with Justin, Jim and Donny), readily agreed to have his crew gather for the staff photo. If you see any of these folks while shopping say hello and tell them thank you from W.O.L.F.!



The Poudre Pet & Feed Supply stores deserve special recognition for donating top-quality meat products and dry kibble. As donors they always surprise and amaze us. A call from them is like an unscheduled visit from Santa Claus. They're a friendly bunch, but one spokesman in particular made an impression: Jasper, the 4-month-old Weimaraner from the Lemay store. He confided in us that some day he hopes to be big and strong like his distant cousins. You go Jasper!

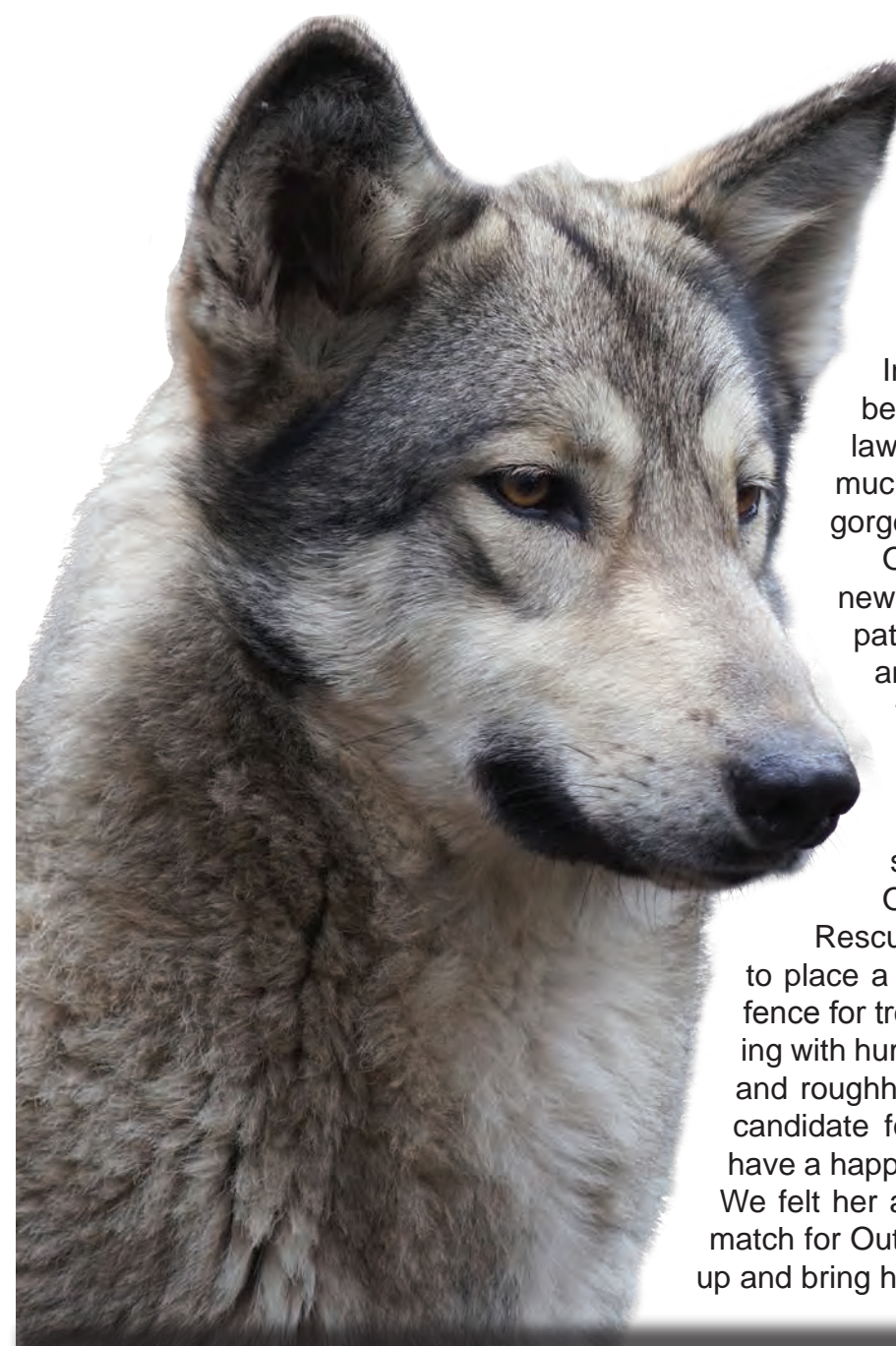
As a small nonprofit that relies largely on community support, we are thankful for their collective time, effort and cooperation. These donations make up a significant and very important part of the wolves' diet. On "meat day", the wolves from one end of the sanctuary to the other have an uncanny sense that something good is on the way. We hope that the meat department staff members from these businesses will have the opportunity to visit W.O.L.F. and see how their donations make a difference. After all, as John, the receiving manager at Whole Foods said, "Let them have the fame. They're the unsung heroes."

## Thank You: Jeremy & Lisa Plume and Robert Owens

Long-time W.O.L.F. supporters Jeremy and Lisa Plume recently donated a 1984 Ford Econoline E350 cargo van! It features a large open capacity and will be very useful for animal and volunteer transport. We would also like to thank Robert Owens for donating a 1991 Chevy pickup truck to W.O.L.F. Their generous gifts will go a long way toward easing the transportation needs of the Sanctuary.

If you are interested in donating a vehicle or other equipment to W.O.L.F. please contact us at [info@wolvesanctuary.net](mailto:info@wolvesanctuary.net)

## Reese's Piece



In mid-August we welcomed the stunningly beautiful Reese, whose arrival has made Outlaw a much happier fellow and the Sanctuary a much quieter place! She has long, long legs and a gorgeous reddish-brown and gray coat.

Outlaw and Ariel were introduced in our last newsletter, and we have been searching for compatible companions for both of them. Ariel's age and shyness wouldn't have been a good match for Outlaw's youth and exuberance. Our wonderful Rescue Coordinator worked diligently with her contacts to find suitable candidates and we are pleased to report the effort was successful!

On July 28 we got a response from a wolf dog Rescue in southern Oregon. They were seeking to place a 2.5 year-old female who would come to the fence for treats but otherwise had no interest in socializing with humans, preferring the company of her own kind and roughhousing with her siblings. She wasn't a good candidate for adoption and the Rescue wanted her to have a happy life with other wolf dogs for companionship. We felt her age and personality would make her a good match for Outlaw, so arrangements were made to pick her up and bring her home.



Reese with her brother in Oregon





Two of our staff members flew into Portland, Oregon on August 16th, rented a van and drove to southern Oregon to meet up with Reese and her rescuers. Driving through the night, they arrived with Reese at the sanctuary on the 17th. Reese was released into the enclosure adjacent to Outlaw for the initial introduction. She explored that enclosure for a couple hours, occasionally visiting with Outlaw through the fence. There were no signs of aggression from either of them so gates were opened to allow a closely supervised face to face meeting. It went well and the human supervisors backed away to monitor from a distance. Soon it was clear that the two of them were going to be best friends forever.



Reese and Outlaw can be seen frolicking wildly throughout the day, every day. She has taught him the joys of a water trough, and he is teaching her (slowly) the joys of human affection as she gets closer to, and more interested in, people with each passing day. They love to watch all the silly humans scurrying about across the pond. Reese is the constant companion and playmate Outlaw so desperately needed. It's hard to imagine a more perfect match!



## Thank You NAVS Sanctuary Grant!

The National Anti-Vivisection Society (NAVS) is dedicated to ending the exploitation of animals used in science and promotes greater compassion, respect and justice for animals through educational and advocacy programs based on respected ethical, scientific and legal theory. W.O.L.F. recently received a \$10,000 grant through the NAVS Sanctuary Fund.

The Fund is an emergency assistance program designed to serve animals in dire situations where immediate intervention is necessary or funds are needed to rebuild or repair from a disaster. W.O.L.F. was awarded the funds for our ongoing repairs and rebuilding due to damage sustained in the recent floods.

## Thank You Eagle Scout Cameron Light!

Some of our greatest inspiration for continuing education and ideas comes from youth. We were once again moved by the dedication of Eagle Scout Cameron Light from Denver in working with our staff to design, build and install several wooden sheds that will house our emergency travel crates. After losing several crates to summer flooding, these sheds will keep the crates safe and dry during future storms.



# Thank You Volunteers!

With all the natural disasters that have been inundating the Sanctuary over the last two years, one would expect the staff to have given up in despair at the sheer volume of labor in front of us. Instead, if you were to come to the Sanctuary, you would find that so much is getting accomplished that we can hardly keep up! And while we would really appreciate it if Mother Nature would give us a break, the outpouring of support for W.O.L.F. through volunteer help has been absolutely amazing and has given us hope. We would like to take a moment here to recognize all of the wonderful people and organizations who have set aside time recently to help the wolves.

**Triangle Fraternity from CSU  
Woodward Governor Co.  
Yampa Mountain High School  
CSU Forestry**

**University of Wyoming  
Boy Scout Troup 376  
All Hands Volunteers  
Cargill**

**Northern CO Adventurer's Group  
SVTA Club from FRCC  
Make A Difference Day Volunteers  
City of Fort Collins**



**University of WY**



**Boy Scout Troup 376**



**All Hands Volunteers**



**Cargill Inc.**



**Northern CO Adventurer's Group**



**CSU Forestry**





SVTA Club from FRCC



Make a Difference Day



Make a Difference Day



Make a Difference Day



Make a Difference Day



City of Ft. Collins Employees



## TIMBERRRR!

We have to give special thanks to Larry Schafer and the Timberline Tree Specialists in Greeley for going the distance (vertically!). Donating their time and labor to bring down several dangerous trees in the enclosures and along fence lines, they helped to make the enclosures safer for wolves and humans alike. All told they donated over \$7,000 worth of work to the Sanctuary in one day! Way to go, guys!

## Meeka

An ear, a tail, a movement behind the bushes, a blur up on the mountain--this is how most of our staff, volunteers and visitors have encountered Meeka over the years. As one of the few people who was able to interact more closely with her, I would like to introduce her, and say good-bye.

Meeka was a protector. She always put herself between her family and people. She was a barker, at every movement and anything that may, or may not, have been alarming. Meeka was fearful and cautious; however, the first time I looked into her eyes I saw curiosity and hope. Hope for a better experience, curiosity about the strange creatures that appeared to bring food and even more strangely remove poop.

I spent a lot of extra time with this cautious girl with the hope and belief that she just needed a little time and understanding, and she would blossom into a courageous and social soul. At first she greeted my extended visits with...you guessed it...BARKING. She soon realized I wasn't all that interesting, and she took a nap. What an incredible moment of trust. This girl who paced and barked now trusted me to be in her space while she slept. Then I started reading to her. This started the whole process over again and eventually Meeka settled. This time, however, and each additional time I visited, she would run a little closer to me, stop, and bark. I took this as a proud declaration by my beloved girl, "Look at me! I'm brave enough to get this close today!"

While Meeka and I never were able to build the relationship I had in mind, what we shared was a beautiful experience. I met her on her own terms, and was rewarded with silence. Sometimes love, respect and trust do not need a declaration, a banner, or a shout of joy. Sometimes love comes softly, with silence and a nap; I wouldn't have it any other way.

Bye-bye, baby girl.

Written by K. Owen





**Loki & Frackette**



# The Thousand-Year Storm



Road closures across the state

Over the past 15 months the communities that make up northern Colorado have suffered an array of challenges from Mother Nature, from the High Park Fire in June 2012 to the devastating flooding in September 2013.

When rain began to fall most residents were happy to have the moisture after a fairly dry summer, and always with the thought of another wildfire not far from their minds. But as the hours passed, and then days, the realization came that this was no ordinary storm and residents along the Big Thompson

and Poudre rivers were encouraged to prepare to evacuate.

Unusually prolonged and heavy rains ranging from four to more than twelve inches in some areas triggered widespread flooding. The resulting damage left thousands around the state struggling to repair and rebuild. Nine people lost their lives, nearly \$2 billion in property was damaged, over 10,000 people were evacuated, and at least 200 miles of roadways were destroyed.

We at W.O.L.F. are among the many affected, and we understand how difficult repairs can be without support. But we also choose to celebrate the spirit of recovery that has risen in Colorado.

The rain subsided and folks got to work. Workers and volunteers coordinated evacuations, set up shelters, fed emergency responders, hosted fundraisers and cleared debris--LOTS of debris--for utilities to be restored.

W.O.L.F. supporters reached out as well, asking if the wolves were okay, what needed to be done, and how they could help. We acknowledge some of this generosity throughout this newsletter from work groups to in-kind donations.

We will continue to embrace the spirit of our communities and move forward. There are multiple ways in which you can help support our efforts: make a monetary donation, purchase and donate items on our wish list or contact us if you have connections for items we need to make repairs. We are also scheduling volunteer work groups to help with projects and repairs. If you are interested in organizing a work group, please contact Amelia, our Volunteer Coordinator, for more information: [awieber@wolfsanctuary.net](mailto:awieber@wolfsanctuary.net)



The road to W.O.L.F. - yay!



## Thank You Sharon Sharp!

In order to ease getting around the Sanctuary in challenging weather, a very generous and dedicated volunteer Sharon Sharp and her husband Jerry recently donated a brand new 2014 Honda Pioneer all-terrain vehicle, with four seats, a dump bed and a hauling capacity of 1,500 pounds! This took us completely by surprise! We are deeply appreciative of this gift and want to give special thanks also to salesman Ryan Wach, sales manager Don Wagner and general manager Jack Star from RPM Motor Sports in Lakewood for the free setup and delivery.

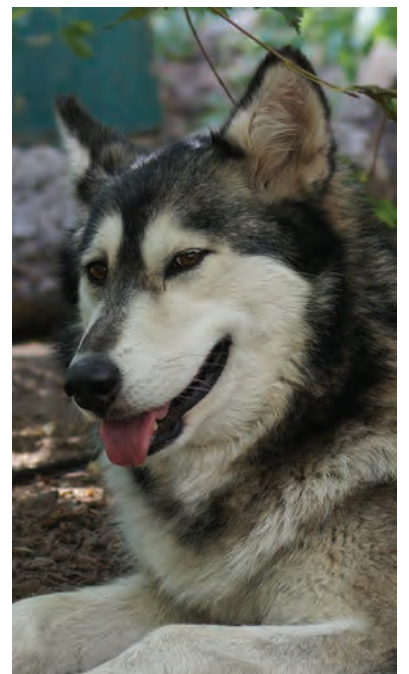
# Animal Update: Bella Roux, Ariel & Outlaw



**Outlaw** is competing with Pax to be the most vocal resident of the Sanctuary and so far he is definitely in the lead! He craves attention and doesn't like to be alone. Before his new girlfriend Reese arrived, he spent much of the day demanding attention from anyone he could see or hear. Outlaw and Reese hit it off right away. They spend hours running and playing together. She's the perfect companion we hoped she would be for him. Now he spends more energy on playing and less on people-chewing, though he still enjoys the occasional nibble. Outlaw is happier and quieter now...until someone visits his new neighbors, Ariel and Thor. Then he comes out with guns blazing...barking as loudly as he can while running the fence. He's certain all humans belong to him and prefers not to share.



**Bella Roux** greets visitors with a short yip or howl, wagging tail and smiling face. She's a cuddle bug! Once inside her enclosure, humans can expect to find her front legs wrapped around their necks as if she's greeting a loved one returning from a long day of work, and she loves to be hugged in return. Her companion, Rajan, often takes exception to her stealing his spotlight and will begin chewing on her. Bella mostly ignores it, and when Rajan's tactics fail he lays down and pouts. Yep, it's clearly a pout. Recently, the two of them went out to their first educational program together. Bella was nervous, but did very well for her first time around a large group of people. We believe her social nature will overcome the apprehension and she'll be happily basking in stardom soon.







Ariel is still nervous around people, but since her introduction to her new companion, Thor, she spends less time hiding and more time watching. As her caretakers search her enclosure for poop each morning, she usually starts running in a nervous circle, but as long as it looks like no one is headed her way she will slow her pacing and eventually stop. We have even seen her venturing a little closer to investigate where we have been and watching curiously as we socialize with Thor. She enjoys Thor's company and they are often seen lying side by side or following each other around. When caretakers are passing out meat, Ariel approaches the front of her enclosure in anticipation. As Thor becomes more comfortable and social with humans, we're hopeful it will rub off on Ariel.



## Staff Spotlight

Karen Silva is a native of Colorado and has always had a deep love for animals. She and her daughter, Jessica, began volunteering for W.O.L.F. in October 2006, caring for 16 of the 18 wolf dogs from the WideAwake Rescue near their home in Gilpin County.

The animals had been at a temporary facility set up for them for four months before Karen knew it existed. She'd never before seen any wild or domestic animal as utterly terrified of humans as they were. All but two of them had severe heartworm infestations and their physical conditions still reflected the neglect they had suffered. Karen's heart was stolen on the spot, and she dedicated her days off to their physical and emotional healing.

The site was located far from the main Sanctuary and most of its volunteers. Access to it at an elevation of 10,000 feet wasn't particularly easy in summer months and as winter set in became difficult at best. Karen was one of a handful of local volunteers in a position to endure the nine-month winters and provide the animals with consistent care. She joined the staff in 2007 as WideAwake Caretaker/Volunteer Coordinator and processed donation receipts for the Sanctuary. During that time she became JJ's first adopted human and most familiar with the WideAwake pack.

As space became available at W.O.L.F., the animals were moved to their permanent home. The transition was completed in October 2008, with the animals testing heartworm negative and in great physical condition. Unfortunately, the commute from Central City to W.O.L.F. proved economically unfeasible in short order, and Karen was forced to travel a different path for a while. She recently relocated to Loveland, Colorado with her four-legged children, Ozzy and Kitty. Karen is excited to rejoin staff as Caretaker for the animals she dearly loves.

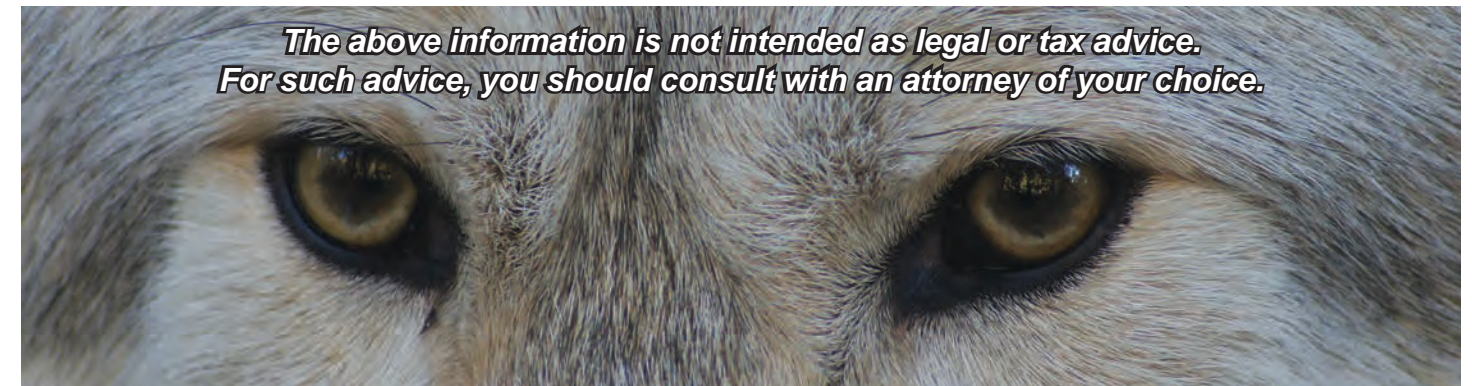


There are many ways to donate to W.O.L.F. including gifts of cash, in-kind gifts of goods or services and estate gifts. Estate gifts are perhaps one of the least understood and the most versatile ways to make a lasting impact on W.O.L.F.

Estate gifts can provide you with tax benefits while simultaneously helping our wolves. Through a planned estate gift, you may be able to increase your current income or provide additional retirement income while reducing your income tax and estate taxes. Some of the most common forms of estate giving include:

1. Will – you can provide a gift to W.O.L.F. through your will by making W.O.L.F. a direct beneficiary. This type of giving is simple, easy and allows you to designate a specific dollar or percentage amount, a gift of real estate, stocks, bonds, or a gift of any other property which is part of your estate. If you already have a will, you may be able to add a codicil to your will without the need to re-do the entire document. However, it is always a good idea to review your will and the rest of your estate plan as circumstances change in your life.
2. Life Insurance Proceeds – another simple way to make a legacy gift is to designate W.O.L.F. as the beneficiary of your life insurance policy. This is a simple and effective way to make a gift that will make a difference for the animals.
3. Charitable Trust – Another method of making a gift is to create a charitable trust and place assets into the trust. There are many types of charitable trusts and it is best to consult an estate planning expert to determine which type of trust might be best for your circumstances.
4. IRA – You can name W.O.L.F. as the beneficiary of an IRA.

There are many ways to make sure that your loved ones and your favorite charities are remembered in your estate planning. The best way to accomplish your goals is to consult with an attorney who is knowledgeable about estate planning. If you would like more information about W.O.L.F. as you develop your estate planning goals, please contact our Rescue Coordinator, Susan Weidel (sweidel@wolfsanctuary.net). She will be happy to provide you or your attorney with information.





# Another Norse God? Why Thor of Course!



Thor

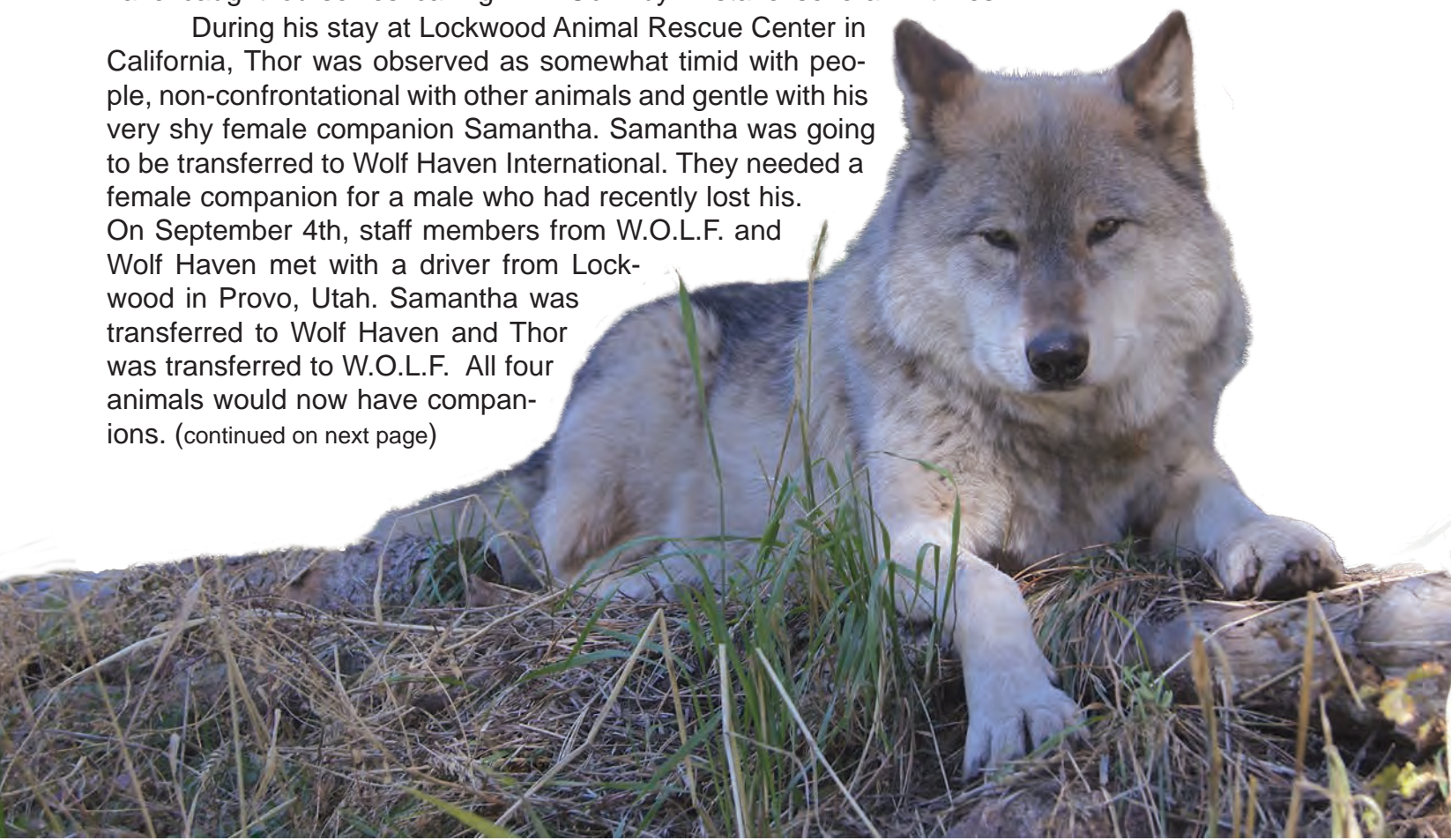
Our sweet, shy girl Ariel had been waiting a little over two months for a companion of her own, and that finally ended in the early hours of September 5th with Thor's arrival from California. Thor was born in 2005 at the same roadside attraction in Alaska that Loki and Odin are originally from (more information about the Alaska rescue can be found in Odin's and Loki's stories on our website). In fact, his name was Jake when he arrived, but because he bears an uncanny resemblance to Odin, we believed the name Thor would be



Odin

more appropriate in our setting. Thor is a year younger than Odin, and most likely, closely related. We have caught ourselves calling him Odin by mistake several times.

During his stay at Lockwood Animal Rescue Center in California, Thor was observed as somewhat timid with people, non-confrontational with other animals and gentle with his very shy female companion Samantha. Samantha was going to be transferred to Wolf Haven International. They needed a female companion for a male who had recently lost his. On September 4th, staff members from W.O.L.F. and Wolf Haven met with a driver from Lockwood in Provo, Utah. Samantha was transferred to Wolf Haven and Thor was transferred to W.O.L.F. All four animals would now have companions. (continued on next page)



## Thank You Wagner Equipment!



After our propane generator quit working, Barry Hunt, the General Manager of Wagner Equipment, rented W.O.L.F. a 22Kw WhisperWatt generator. Replacement delays and floodwaters stretched our original one-week rental nervously into three weeks, for which we were charged \$200--typically the daily cost for such a unit. We can't thank Barry enough for such generosity. BTW, that baby is *quiet!*

## Thank You USDA Grant!

The USDA Natural Resource Conservation Service has a voluntary Wildlife Habitat Incentive Program for conservation-minded landowners who want to develop and improve wildlife habitat on agricultural land, nonindustrial private forest land and reservations. W.O.L.F. received a \$10,595 grant for recovery from the High Park Fire and mitigation work. We are honored to receive the funds; we support their efforts to improve wildlife habitats in our nation through this program; and we endorse their priorities of protection, restoration and development.



(continued from previous page) Thor is adapting to his new home rapidly and learned the separation routine for meat feeding the very first time he was exposed to it--not really surprising since he apparently lives to eat. Appearance isn't the only thing he has in common with Odin. He's always near the gate when humans approach, fully expecting something edible to pass within his reach. He tries to taste almost everything. When meats are passed out, he consumes it at nearly the speed of light, which is why the separation routine is necessary. He isn't food aggressive and doesn't chase Ariel away from it...he just gets to it before she can.

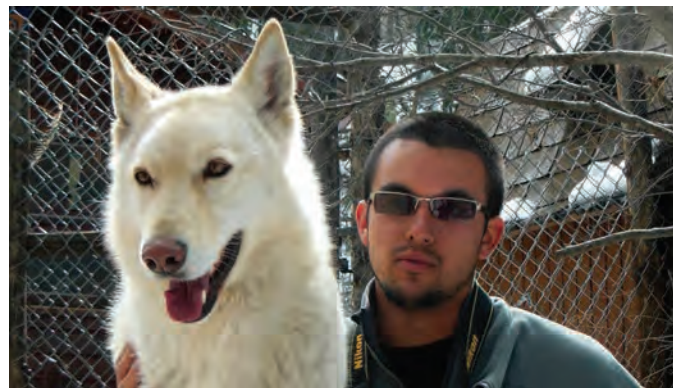
Thor is indeed a non-confrontational fellow. He remains quite calm in the face of the nerve-racking tirades his neighbor, Outlaw, launches whenever nearby humans aren't paying attention to him. Thor's apprehension toward humans is fading and he frequently assumes a playful stance when they enter his enclosure. He closely follows staff as they're doing the housekeeping chores. He's decided that back and neck scratches actually feel pretty darn good!

Ariel and Thor seem to enjoy each other's company, and we hope he'll convince her to come all the way out of her shell someday.





# Volunteer Spotlight



The W.O.L.F. staff would like to feature Kaitlin MacLean and Anthony "Tony" Francher. Kaitlin became interested in W.O.L.F. when a friend's grandmother, a regular donor of the Sanctuary, continued to give her our newsletters. Missing animals and working outside, she decided to come to a volunteer orientation, with Tony along for support. By the end of the meeting they were both hooked!

Kaitlin and Tony have always been very reliable, hard-working volunteers. When they come to the Sanctuary, anyone working with them knows they will

finish every task given to them. Whether they are chopping up meat, hauling heavy debris, or socializing with a wolf, Kaitlin and Tony are incredibly fun to work with. Both of these volunteers have a gift for photographing all of our wolves and wolf dogs.

We are never surprised to have Kaitlin and Tony go above and beyond, but the staff was blown away when they traveled four hours to the Sanctuary after flooding closed Highway 34, a major route from Estes Park to the Front Range communities. They were not going to let a natural disaster stand in the way of helping and seeing their favorite "puppies". We are so grateful for their hard work and unwavering passion for W.O.L.F.

Originally from New York, they moved to Estes Park, Colorado together and began volunteering in February 2012. Tony is a seasonal ranger for Larimer County and Kaitlin is a waitress at Big Horn Restaurant. They are both students of Empire State College, Tony in Biology and Kaitlin in Environmental Science. Their goal is to explore the core 58 National Parks in America. So far they have seen nine. Their hobbies include photography, manual labor, hiking, and birding.



# The Holidays are just around the corner...

Want to get a head start on your shopping and help the Sanctuary at the same time? Check out this year's W.O.L.F. merchandise at our on-line store! From our beautiful full color, 12-month calendar to unique jewelry, apparel, drink ware, and more you are sure to find something for everyone on your list.

And don't miss the debut of our first book, **Wolf Wit**. You will not find anything particularly profound in this book regarding the language of wolves. Instead we hope you enjoy (and even laugh out loud) at our interpretations of the broad range of personalities who call W.O.L.F. home.

Go to [www.wolfsanctuary.net/store.html](http://www.wolfsanctuary.net/store.html) to view all of our wonderful new items. But remember to hurry. Orders must be placed by December 10<sup>th</sup> to be received in time for Christmas!



Don't forget about gift memberships! They are a great way to help the Sanctuary and give a loved one a gift that will last the entire year with a year's subscription to our quarterly newsletter and a special member window decal.

Not a member yourself? There is still time! Purchase or renew your membership today and your 2014 calendar is free! Go to [www.wolfsanctuary.net/memberships.html](http://www.wolfsanctuary.net/memberships.html) for details.

Your support makes what we do for the wolves in our care possible. Thank you for helping us thrive over the years. Your dedication and compassion are an inspiration to all of us here at W.O.L.F.

**Wishing You  
Joyous Howlidays & A  
Prosperous New Year**

The Wolves, Volunteers,  
Directors & Staff







**W.O.L.F. Sanctuary**  
Post Office Box 1544  
La Porte, CO 80535-1544  
970-416-9531 [wolfsanctuary.net](http://wolfsanctuary.net)  
[info@wolfsanctuary.net](mailto:info@wolfsanctuary.net)

NON-PROFIT  
US POSTAGE  
PAID  
Fort Collins, CO  
Permit No. 627

**W.O.L.F.**

**Summer 2013**

**W.O.L.F.**



## Once again we are participating in Colorado Gives Day!

Last year this event raised over \$10,000 for W.O.L.F., thanks to **you**. This year we are once again asking for your help to raise \$25,000 for the wolves in our care.

On Tuesday, December 10<sup>th</sup> starting at 12AM you have 24 hours to donate online. 100% of all donations made to W.O.L.F. on this day will come directly to the Sanctuary with FirstBank matching a percentage of the total donations received.

Every little bit helps! Even if you don't live in Colorado you can still donate on December 10<sup>th</sup>. To help us reach our goal, please visit [www.coloradogives.org/WOLF/overview](http://www.coloradogives.org/WOLF/overview)

In addition, you can help W.O.L.F. win up to \$7,000 from FirstBank! Simply like FirstBank Facebook page to participate in a trivia competition twice a day from December 2 - 6. Each winner will be able to have \$1,000 donated to the charity of their choice, up to \$2,000! Go to [www.facebook.com/efirstbank](http://www.facebook.com/efirstbank)

If 30 supporters donate to W.O.L.F. on December 10<sup>th</sup> the Sanctuary will automatically be entered into the Luck-of-the-Draw Prize contest for a chance to win an additional \$5,000!

Want to keep up to date on the happenings at the Sanctuary? Follow us online to find out about upcoming events, learn more about the animals in our care or simply enjoy the videos and photos.



[www.wolfsanctuary.net](http://www.wolfsanctuary.net)



[www.facebook.com/nocowolfsanctuary](http://www.facebook.com/nocowolfsanctuary)



[www.linkedin.com/company/w.o.l.f.-sanctuary](http://www.linkedin.com/company/w.o.l.f.-sanctuary)



[www.youtube.com/user/WolfSanctuaryDotNet](http://www.youtube.com/user/WolfSanctuaryDotNet)